

# **The interdisciplinary research process in practice**

*A workshop about the skills and tools necessary for interdisciplinary research*

Hosts: Utrecht University

Emma Groenendijk (Liberal Arts and Sciences)

Iris van der Tuin (Liberal Arts and Sciences)

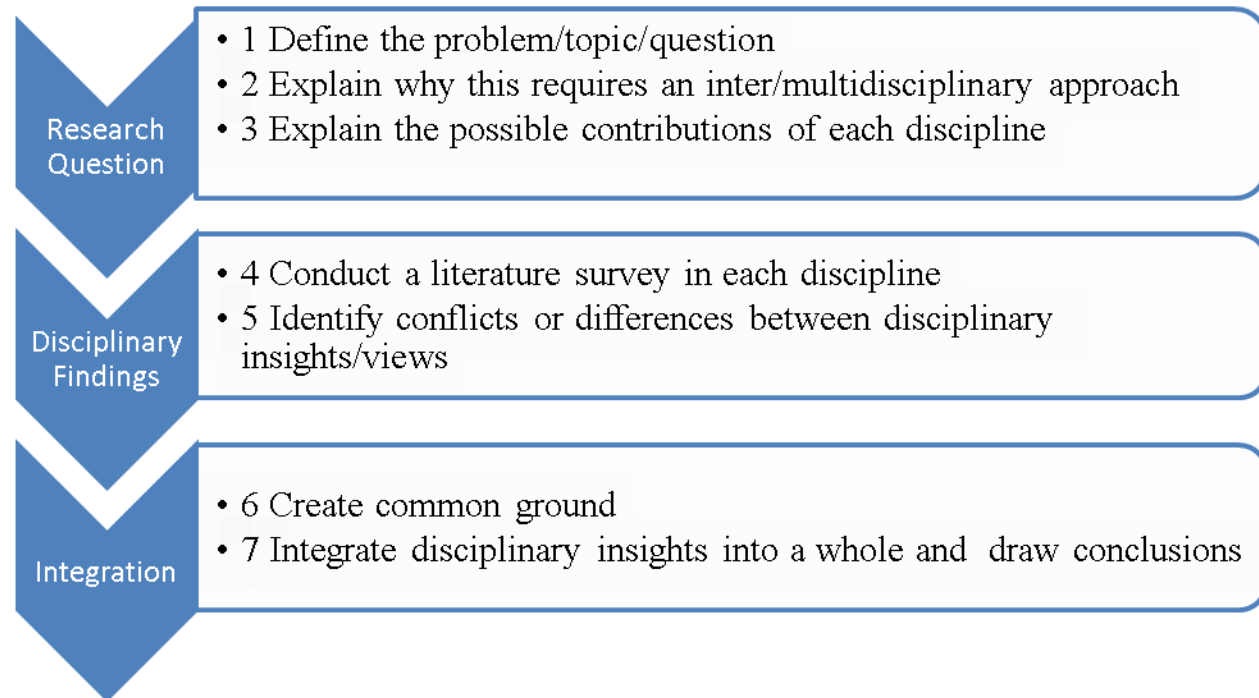
Merel van Goch (Liberal Arts and Sciences)

Siebren Teule (Liberal Arts and Sciences)

Hanne Oberman (Liberal Arts & Sciences)

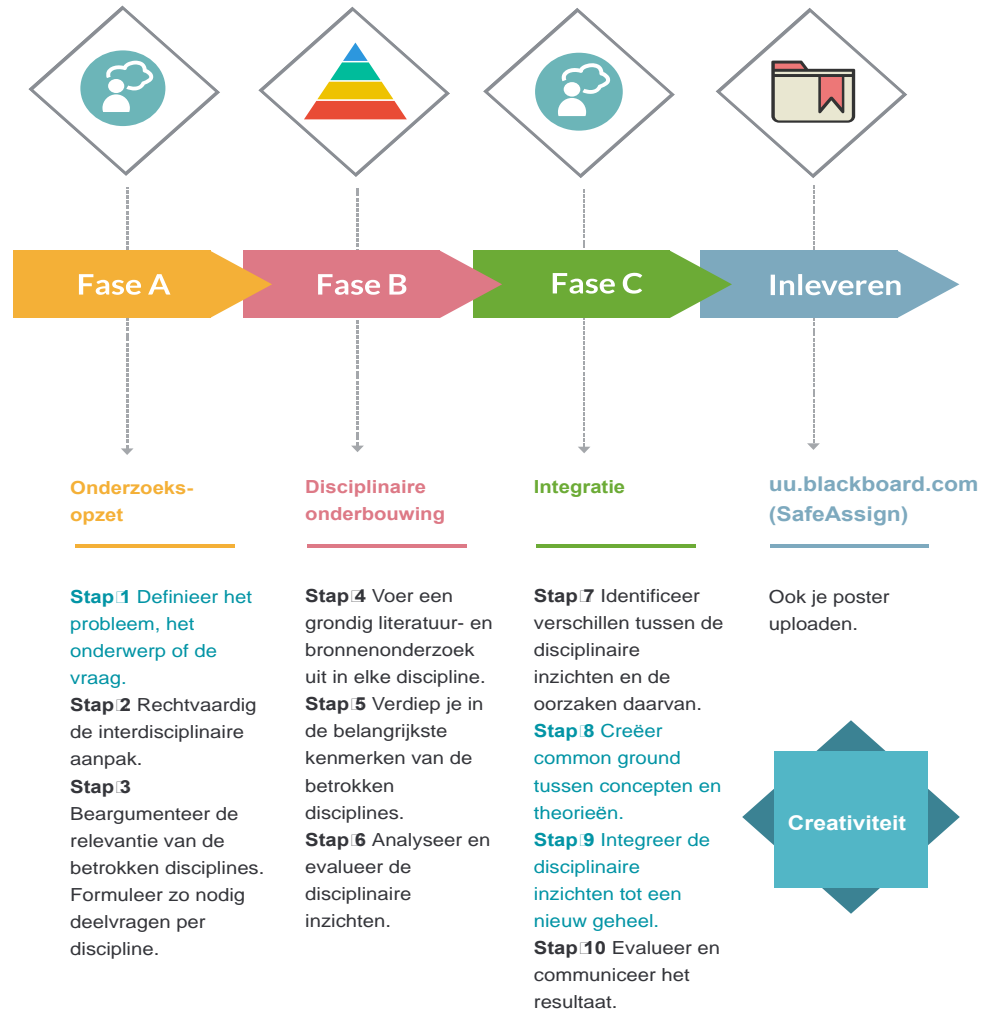
Lonneke Schellekens (Educational consultant & trainer)

# Why this workshop?



Model based on Repko & Szostak (2017)

# Interdisciplinair onderzoeksproces



# The Research Question

## **Assignment 1:**

1. Read the case study
2. Try to formulate a suitable research question on the basis of what you have read

# Findings on the research question

## Criteria for the research question

- researchable, doable in time and scope
- open-ended (not a yes/no question)
- well-formulated, in every-day language
- disciplinary neutral
- no disciplinary jargon
- no personal bias

## Wrap up:

- Does the research question meet the criteria?
- What helped you formulate a suitable research question?

# Common ground and integration

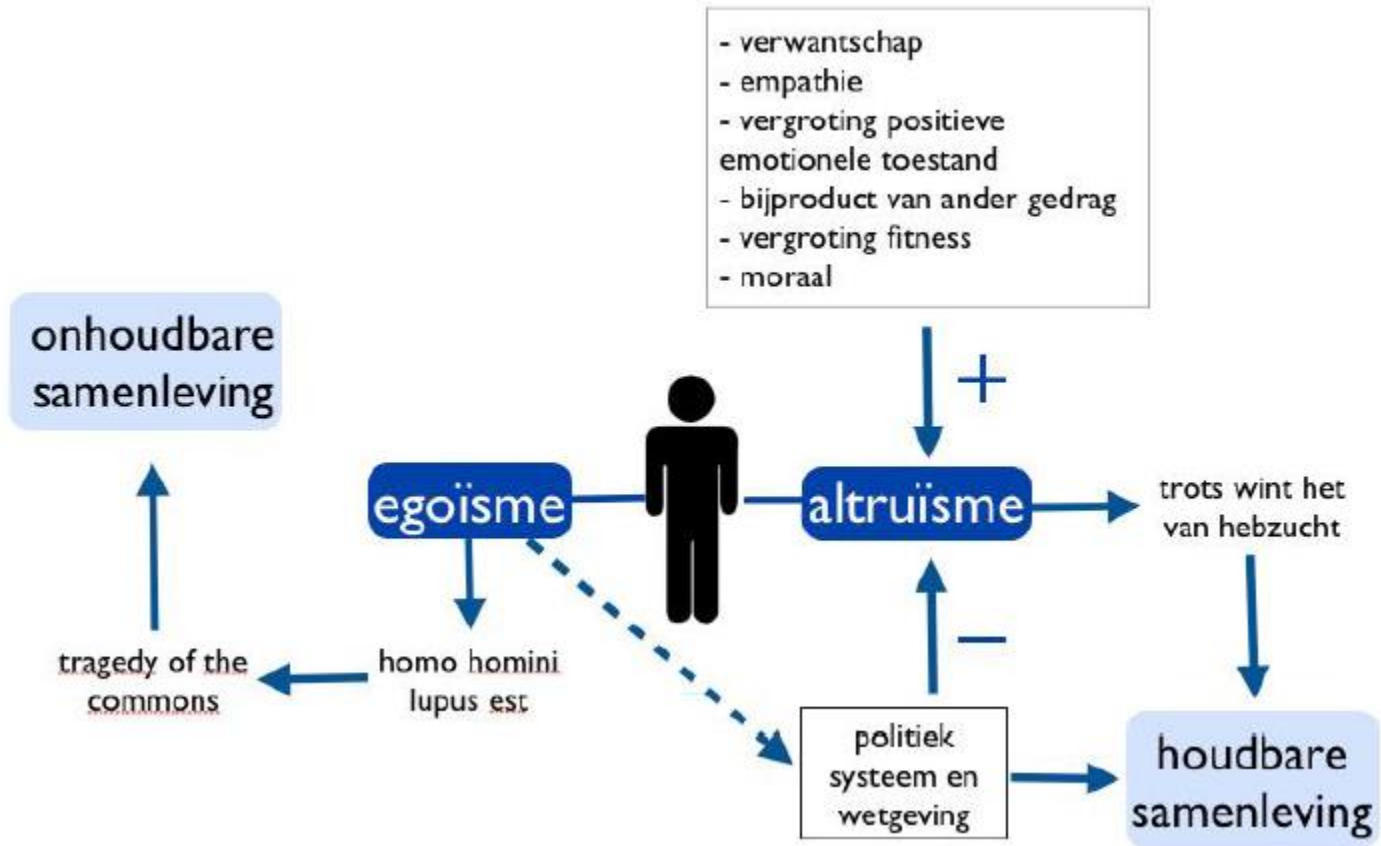
## **Assignment 2:**

1. Read the disciplinary insights for your discipline
2. Discuss: what do the different disciplinary insights have in common?
3. Try to develop a comprehensive view by applying integrative techniques

# Integrative techniques

- **Redefinition:** modifying or redefining concepts in different texts and contexts to bring out a common meaning
- **Extension:** extending a theory, or the assumptions underlying a theory, so that it includes elements identified by other authors
- **Transformation:** addressing opposites by placing these on a continuum
- **Organisation:** organizing concepts, assumptions, theoretical approaches, and even entire disciplines to bring out a relationship between them
- **Intension:** shortening a theory, or the assumptions underlying a theory, so that one theory conforms to the other
- **Distinguishing:** analyzing the concept to bring out the underlying non-commonality in meaning

# How can altruism in society be explained?





# Findings on the integrative techniques

(presentation of integration from the case study)

- In what way did the integrative techniques help you?
- Did you bridge the gap between multi- and interdisciplinarity?

# Thanks for your hard work and input!

Contact information:

Lonneke Schellekens

Siebren Teule

Iris van der Tuin

Merel van Goch

[L.H.Schellekens@uu.nl](mailto:L.H.Schellekens@uu.nl)

[s.g.j.teule@uu.nl](mailto:s.g.j.teule@uu.nl)

[i.vandertuin@uu.nl](mailto:i.vandertuin@uu.nl)

[m.m.vangoch@uu.nl](mailto:m.m.vangoch@uu.nl)